

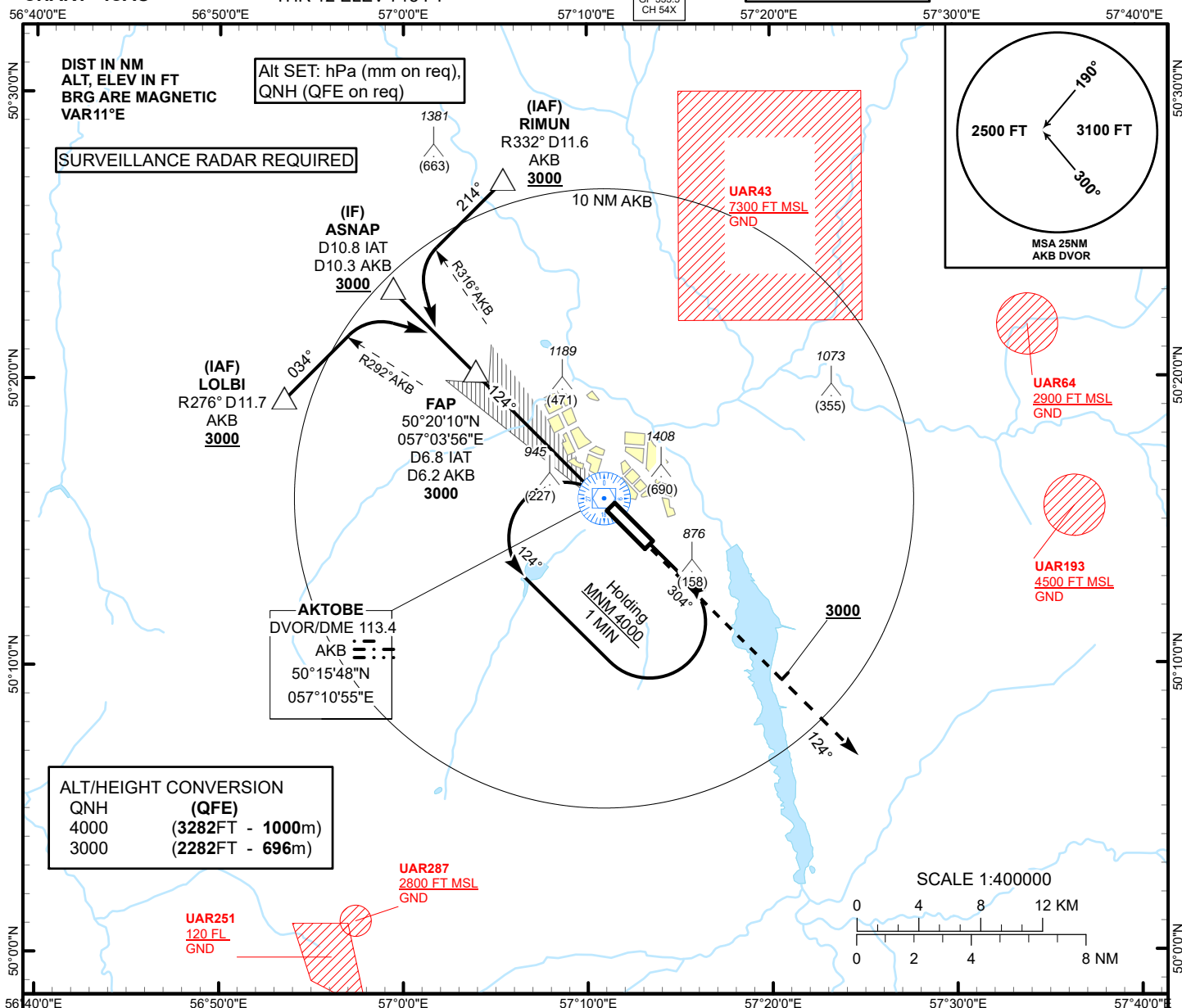
INSTRUMENT
APPROACH
CHART - ICAO

AERODROME ELEV 741 FT
HEIGHTS RELATED TO
THR 12 ELEV 718 FT

ILS
LLZ 111.7
IAT
GP 333.5
CH 54X

AKTOBE TOWER 128.0
AKTOBE ATIS (EN) 126.0
AKTOBE ATIS (RU) 127.80

AKTOBE
ILS/DME
RWY 12



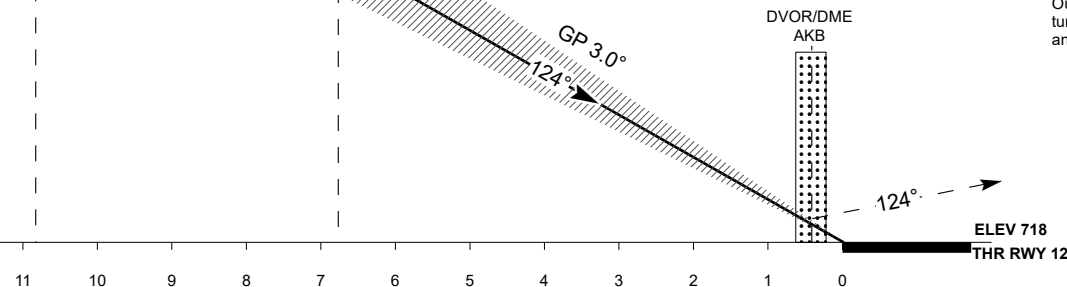
ALT/HEIGHT CONVERSION	
QNH	(QFE)
4000	(3282FT - 1000m)
3000	(2282FT - 696m)

IF
ASAP
D10.8 IAT
D10.3 AKB
3000

FAP
D6.8 IAT
D6.2 AKB
3000

TRANSITION ALT
10000

MISSED APPROACH
Climb on track 124° to 3000.
After passing 2000 radar
vectoring will be provided
RADIO FAILURE:
In case of RCF climb on track
124° to 2000 or above.
Outbound to D6.6 NM AKB,
turn RIGHT to AKB. Climb to 4000,
and join to holding pattern.



Aircraft Category		A	B	C	D	THR - DME IAT	6.8	6	5	4	3	2	1
Straight-in Approach OCA/H						DME AKB	6.2	5.5	4.5	3.5	2.5	1.5	0.5
	CAT I	942(223)	942(223)	942(223)	942(223)	ALTITUDE	3000	2713	2385	2058	1734	1411	1090
						HEIGHT	(2282)	(1995)	(1667)	(1340)	(1016)	(693)	(372)

DME IAT ZERO RANGED TO THR RWY 12

Aerodrome Operating Minima DH ft x RVR(CMV)	CAT I					GS	Kt	80	100	120	140	160	180
						Rate of descent	ft/min	420	530	630	740	840	950

AKTOBE (UATT)
ILS/DME RWY12

AERONAUTICAL DATA TABULATION

ILS approach to RWY12 from AKB DVOR/DME, LOLBI, RIMUN, ASNAP	
Fix/point	Coordinates
AKB DVOR/DME	50° 15' 48.3"N 057° 10' 54.8"E
LOLBI R276°, D11.7 AKB (IAF)	50° 19' 13.1"N 056° 53' 28.5"E
RIMUN R332°, D11.6 AKB (IAF)	50° 26' 51.3"N 057° 05' 24.1"E
ASNAP D10.8 IAT, D10.3 AKB (IF)	50° 23' 02.3"N 056° 59' 25.8"E
D6.8 IAT, D6.2 AKB (FAP)	50° 20' 09.6"N 057° 03' 56.0"E
THR RWY12	50° 15' 23.08"N 057° 11' 22.49"E
IAT LLZ	50° 13' 49.3"N 057° 13' 47.9"E